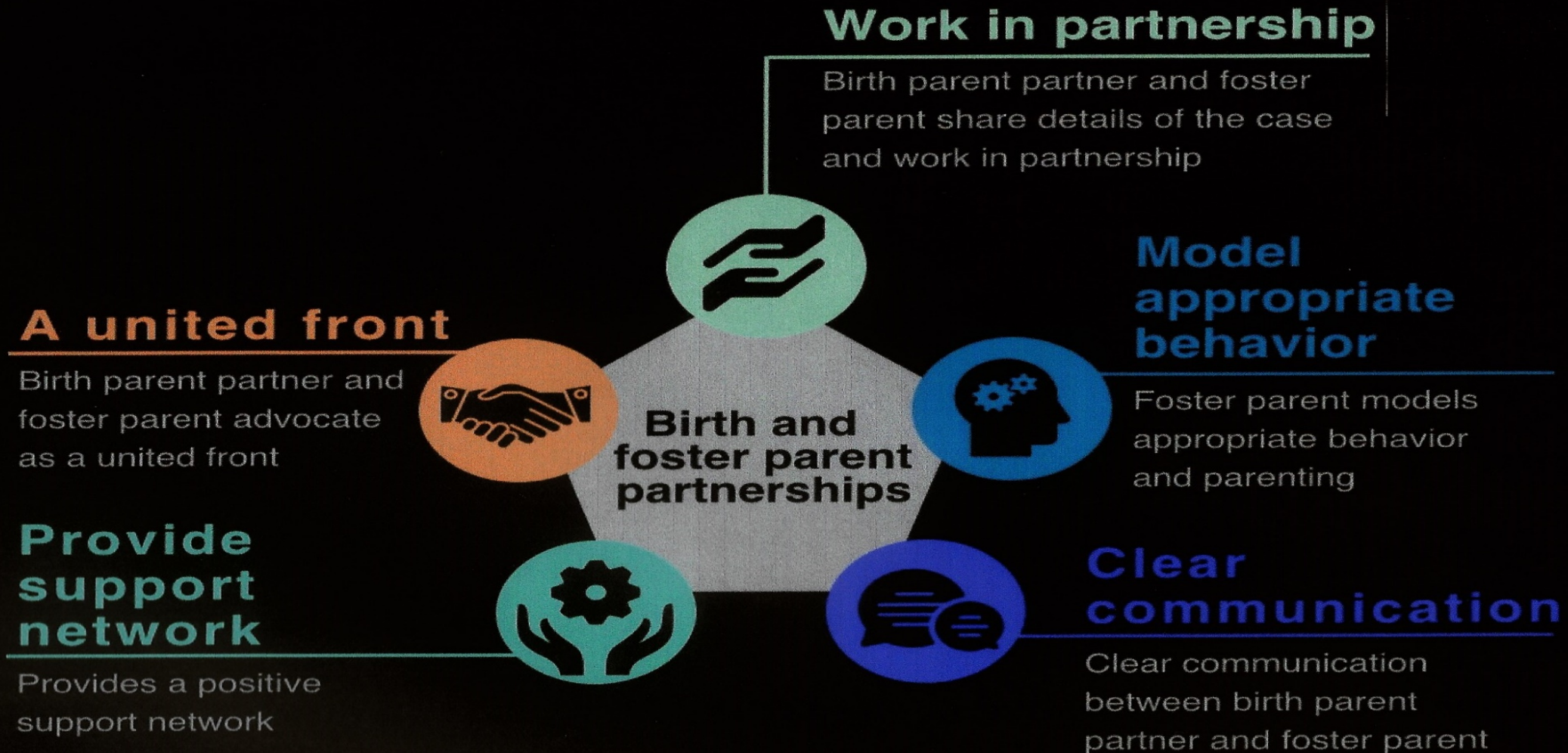


Parent Partnerships are Powerful

Mission Statement

Redefining family and permanency by creating partnerships between foster, birth parents and social services in order to strengthen shared parenting and support the permanency of children.

Key elements of this approach



Parent Partnership are Powerful

Benefits to the birth parent, foster parent and child

Increased support

Strengthened natural support system

Strengthened relationship with child

More likely to be successful

Better understanding of child's needs

More diverse opportunities to help family

More flexibility in role

Strengthened relationship with child

Permanency for the child

Information Sharing between families

Reunification is more likely

Strengthens family